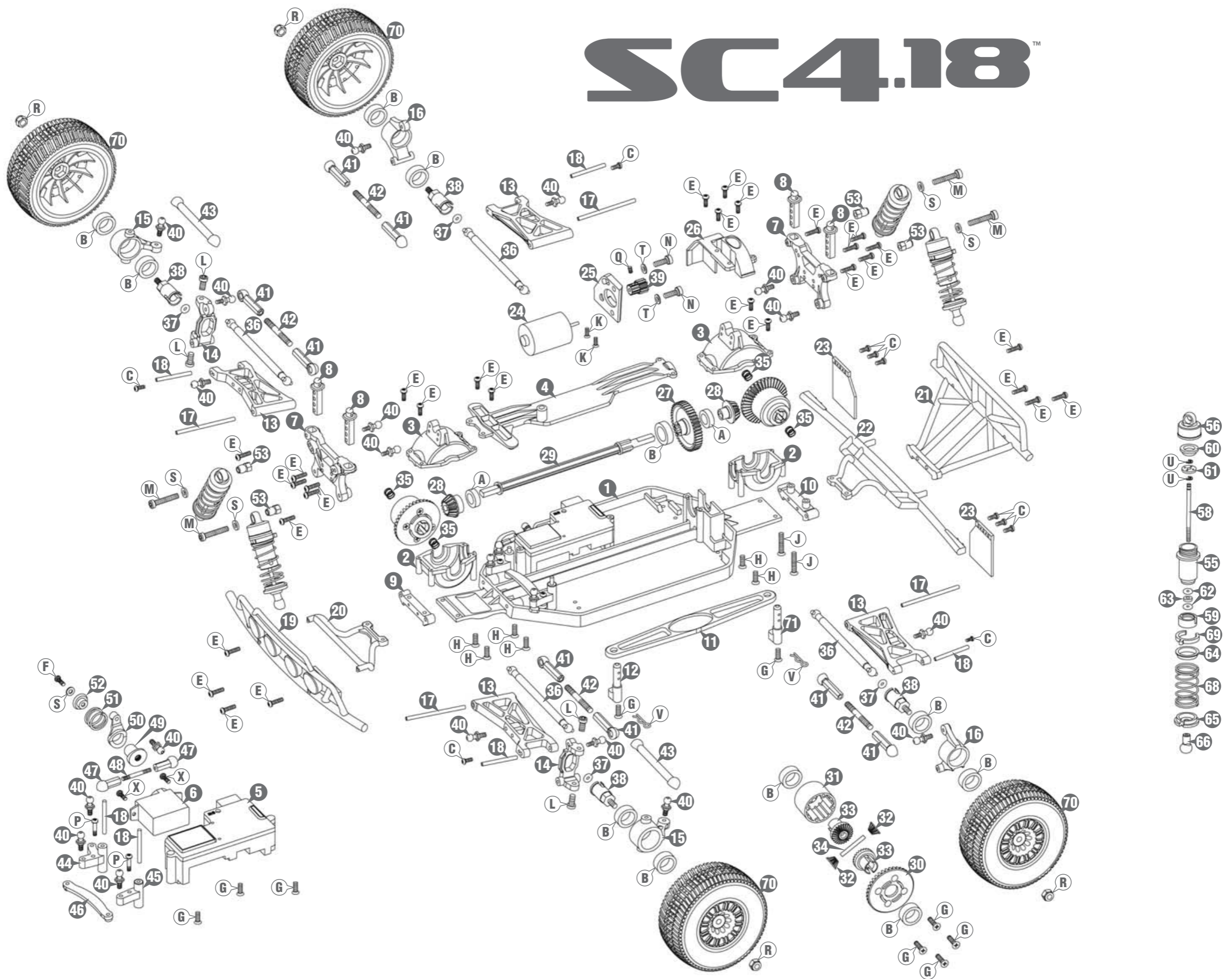


# SC4.18™



#	Item Description	Available in Stock #	#	Item Description	Available in Stock #	#	Item Description	Available in Stock #	#	Item Description	Available in Stock #
1	Chassis	DIDC1028	24	M370 Motor	DIDC1030	47	Ball Cup (Short)	DIDC1042	HARDWARE		
2	Lower Gearbox Half	DIDC1006	25	Motor Mount	DIDC1031	48	Steering Rod	DIDC1042	A	6x10mm Ball Bearing	DIDC1070
3	Upper Gearbox Half	DIDC1006	26	Spur Gear Cover	DIDC1027	49	Servo Saver Spline	DIDC1011	B	8x12mm Ball Bearing	DIDC1071
4	Upper Chassis Brace	DIDC1021	27	45 Tooth Spur Gear	DIDC1005	50	Servo Saver Arm	DIDC1011	C	2x4mm Round Head Screw	DIDC1057
5	RE-18 Receiver/ESC Unit	DIDM1000	28	15 Tooth Differential Pinion Gear	DIDC1003	51	Servo Saver Spring	DIDC1011	E	2x8mm Round head Screw	DIDC1057
6	Servo	DIDM1001	29	Center Drive Shaft	DIDC1007	52	Servo Saver Cap	DIDC1011	F	2x10mm Round Head Screw	DIDC1057
7	Shock Tower	DIDC1054	30	38T Differential Ring Gear	DIDC1003, DIDC1061	53	Upper Shock Mount	DIDC1029	G	2x8mm Flat Head Screw	DIDC1057
8	Body Mount	DIDC1054	31	Differential Case	DIDC1004, DIDC1061	55	Shock Body	DIDC1016	H	2x10mm Flat Head Screw	DIDC1057
9	Front Hinge Pin Holder	DIDC1024	32	Diff Bevel Gear (Small)	DIDC1002, DIDC1061	56	Shock Cap	DIDC1016	J	2x14mm Flat Head Screw	DIDC1057
10	Rear Hinge Pin Holder	DIDC1024	33	Diff Bevel Gear (Large)	DIDC1002, DIDC1061	58	Shock Shaft	DIDC1016	K	2.5x8mm Flat Head Screw	DIDC1057
11	Battery Hold Down	DIDC1026	34	2x16.5mm Pin (Diff Gear Pin)	DIDC1037, DIDC1061	59	Shock Seal Retainer	DIDC1016	L	2.5x8mm Socket Head Cap Screw	DIDC1057
12	Front Battery Post	DIDC1028, DIDC1063	35	Dogbone Spring	DIDC1002, DIDC1062	60	Shock Diaphragm	DIDC1016	M	2.5x14mm Socket Head Cap Screw	DIDC1057
13	Suspension Arm	DIDC1018	36	Dogbone	DIDC1009	61	Shock Piston	DIDC1016	N	3x6mm Socket Head Cap Screw	DIDC1057
14	Front Hub Carrier	DIDC1012	37	2x5mm O-Ring	DIDC1008, DIDC1062	62	Shock O-Ring	DIDC1016	P	2x8mm Round Head Shoulder Screw	DIDC1057
15	Steering Knuckle	DIDC1013	38	Axle	DIDC1008	63	Shock O-Ring Spacer	DIDC1016	Q	3x3mm Set Screw	DIDC1057
16	Rear Hub	DIDC1014	39	12T Pinion Gear (.6 Mod, 2mm Shaft)	DIDC1032	64	Upper Shock Spring Retainer	DIDC1016	R	3mm Nylon-Insert Lock Nut	DIDC1001, DIDC1057
17	2x36.5mm Pin (Inner Hinge)	DIDC1035	40	Ball Stud	DIDC1034	65	Lower Shock Spring Retainer	DIDC1016	S	2.6x5mm Washer	DIDC1057
18	2x22mm Pin (Outer Hinge, Steering)	DIDC1036	41	Ball Cup (Long)	DIDC1042	66	Shock End	DIDC1016	T	3x6mm Washer	DIDC1057
19	Front Bumper	DIDC1052	42	Camber Rod	DIDC1042	68	Long Shock Spring (Heavy/Orange)	DIDC1040	U	1.5mm E-Clip	DIDC1057
20	Front Bumper Brace	DIDC1052	43	Tie Rod	DIDC1042	69	Shock Pre-Load Spacer 1mm	DIDC1016	V	Body Clip (Small)	DIDC1000, DIDC1057
21	Rear Bumper	DIDC1053	44	Steering Bell Crank (Right)	DIDC1010	69	Shock Pre-Load Spacer 2mm	DIDC1016	X	2x6mm S/T Round Head Screw	DIDC1057
22	Rear Bumper Brace	DIDC1053	45	Steering Ball Crank (Left)	DIDC1010	70	Wheel/Tire/Foam Insert Assembled	DIDC1056			
23	Mud Flap	DIDC1055	46	Steering Drag Link	DIDC1010	71	Rear Battery Post	DIDC1028, DIDC1063			